

2023

TEACHER TRAINING

@THELINGUAVIVACENTRE



ESTD

1977

LINGUAVIVA
CENTRE

45 LOWER LEESON STREET

Dublin 2 | Ireland

info@linguaviva.com

www.linguaviva.com

TEACHER TRAINING

Our Centre

The Linguaviva Centre has a dedicated teacher training team. We are an accredited centre for Trinity Cert TESOL. Our Trainers also provide **Erasmus +** programs (**OID no: E10059096** for K1 funding) throughout the year and Spirit of Dublin seasonal courses also suitable for this profile of client. Our team is highly trained (post graduate teaching qualifications) and has ample experience training Overseas Teachers to maximise student engagement and integrate **21st century skills** in their teaching.

We have excellent residential and carefully selected homestay accommodation. We run **'CLIL and Communication'** Refresher Courses, **'Irish Culture, Literature & History'** Courses. We also offer **Spirit of Dublin Seasonal Courses** which focus on the unique spirit of Dublin in the seasons of Winter, Spring (St Patrick's Day), Summer Bloom's day and Autumn Halloween. We are founder members of Quality English and Marketing English in Ireland and are, in fact, the oldest English language school in Dublin, founded in 1977. We aim to offer a truly personalized service in our boutique premises. For that reason our motto is **'Proud of our Past, Focused on Your Future'**.

Teachers wishing to apply for funding for these courses may make an application to enrol before submitting their Erasmus + funding application and we will send enrolment documentation which can be submitted with the funding application. We will complete **Europass Mobility documents** when requested. These documents are generated by the sending organization i.e. the school of the course participants

Our Aims

Our goal is to design and deliver training courses which focus on the **needs of practising teachers throughout Europe**. To that end we meet all participants before the course to evaluate needs and to make sure that expectations can be fully met. We have small group sizes so there can be individual attention to development.

We understand that teachers want practical ideas and materials to take back to their classrooms. We focus on **secondary and vocational teachers** in our set date courses and primary teachers can also apply in closed groups through our **General English & Teacher Training program**. We know that teachers are interested in a blend of workshops, lectures and visits, activities and excursions to complement the busy schedules they have at home as teachers. We want learning to be fun!

We aim to provide a learning environment that values participants' experience as teachers in an atmosphere that is communicative, and creative. One of the great advantages of these courses is that they provide opportunities for participants to make lasting connections in the educational sector around Europe, helping them to reflect on and enhancing their teaching as well as improving their own language skills."

IN-SERVICE TEACHER TRAINING

The Linguaviva Centre is a validated Course Provider for Trinity Cert TESOL. We have a dedicated Teacher Training team which also offers **Erasmus +** Courses for Overseas Teachers. We offer a full-time two-week course in **CLIL & Communication Skills** along with a **Irish Culture, History & Literature** course which are both very popular. The intensive course format includes both workshops and lectures. We use a **'Reflective Journal'** to gather teaching materials which participants can use once they return to their schools. Teachers also get the opportunity to **team teach** and give/receive feedback from their peers and tutors on how to make their classes even more communicative and effective. Teachers who have taken these courses recently are German, Polish, Czech, French, Spanish and Italian, as well as Russian and South American.



CLIL & COMMUNICATION SKILLS

This option will allow you to immerse yourself in communicative language teaching and CLIL. You will spend your mornings in input sessions (lectures + workshops) and your afternoons exploring the city with professionally guided tours. You can expect to return home with many new ideas and practical material to implement in your own classrooms.



GENERAL ENGLISH + TEACHER TRAINING

This variation is for teachers who would like to focus on improving their language skills as well as enhancing their teaching methodology and approaches with 8 hours of invaluable input sessions focused on communicative teaching approaches and techniques.

	Teacher Training	General English + Teacher Training
Max number / class	15	12
Minimum Level	B2	A2
Minimum Age	21	21
Length	1 or 2 weeks	1 or 2 weeks
Hours / week	28	23
Timetable	Monday to Friday 9.00 - 13.00 4 Afternoon Activities 14.00 - 16.00	Monday to Friday 9.00 - 12.15 Monday to Thursday 13.00 - 15.00
Start Dates	July 3rd July 31st October 9th	Every Monday / Min number of 4 participants



Included in the Course

**PERSONAL NEEDS ASSESSMENT
VIA VIDEO CALL WITH OUR
DIRECTOR OF EDUCATION**

ACCESS TO VIVA SOCIAL CLUB

**ACTIVITIES INCLUDED IN
28H PROGRAMME**

COURSE COMPLETION CERTIFICATE

FULL ACCESS TO SCHOOL FACILITIES



Our Reflective Journal will give you a systematic approach to recording the teaching ideas and materials you experience on the course.



Single Ensuite Residential Accommodation is the ideal solution for teachers on these courses and is available to book in The Point Residence situated only a 25-minute walk from the school.



Workshops on Classroom Technology will give teachers a modern approach to incorporating digital tools for more learner centred lessons that are innovative and fun.



CLIL & COMMUNICATION SKILLS

Modules:

- Communicative Language Teaching
- Teaching Through Collaboration
- Creating Student Voice & Choice
- Teaching Through Creativity
- Teaching Through Language Tasks
- Teaching with Technology
- Teaching Pronunciation
- Teaching CLIL
- Designing CLIL Classes
- Teaching Practice
- Team Teaching
- Peer & Tutor Critical Friend
- Educational Systems around the World
- The Web as a Teaching Resource
- Teaching through Film
- Using Ted Talks in the Classroom
- Reflective Journaling

870 EURO

Included in the Price

REGISTRATION FEE

2-WEEK COURSE CONSISTING OF
56 HOURS TAKEN OVER 10 DAYS
FROM MONDAY TO FRIDAY

USE OF DIGITAL MATERIALS

EXCURSIONS & SOCIAL
PROGRAMME MONDAY TO FRIDAY

COMPLETION CERTIFICATE

Course Outcomes:

- Increased personal confidence in English Language Teaching
- Greater understanding of Student's Needs
- Increased awareness of technology & the internet as resources
- Increased awareness of the possibilities of exploiting texts
- Creation of a Reflective Journal of Materials.
- Sharing of teaching experience

Start Dates
2023

July 17th

IRISH CULTURE, HISTORY & LITERATURE

Modules:

- An Insider's Guide to Ireland
- Short History of Modern Ireland X 2
- Hiberno English
- Irish Literature
- Teaching with Irish Films
- Teaching with Storytelling
- Irish Mythology
- CLIL Lessons about Ireland
- A Short History of English
- Story Mapping
- Ancient Ireland
- Dublin your Fun!
- Humans of Dublin
- Teachers' Reflective Journal of Materials
- Team Teaching about Ireland

870EURO

Included in the Price

REGISTRATION FEE

2-WEEK COURSE CONSISTING OF
56 HOURS TAKEN OVER 10 DAYS
FROM MONDAY TO FRIDAY

USE OF DIGITAL MATERIALS

EXCURSIONS & SOCIAL
PROGRAMME MONDAY TO FRIDAY

COMPLETION CERTIFICATE

Course Outcomes:

- Increased personal Confidence in teaching English
- Greater understanding of Ireland
- Increased awareness of the internet as resource
- Increased ideas for exploiting texts
- Creation of Reflective Journal of Ideas and Materials.
- Sharing of teaching experience and ideas.
- Teaching Practice & Critical Buddy

Start Dates
2023

July 3rd

July 31st

October 9th

GENERAL ENGLISH + TEACHER TRAINING

Possible Modules:

- **General English 15 hours per week**
Core hours to be taken with any two of the options below 4 hours each
- Communicative Language Learning (option 1)
- Teaching Through Creativity (option 2)
- Teaching Pronunciation (option 3)
- Teaching CLIL (option 4)
- Peer Teaching & Critical Buddy (option 5)
- Using the Internet as a Teaching Resource (option 6)
- Teaching through Film (option 7)

Course Outcomes:

- Increased confidence speaking English
- Increased confidence teaching English
- Increased awareness of the internet as a teaching tool
- Sharing of teaching experience

790EURO

Included in the Price

REGISTRATION FEE

**2-WEEK COURSE CONSISTING OF
30 HOURS OF GENERAL ENGLISH +
16 HOURS OF TEACHER TRAINING
TAKEN OVER 10 DAYS FROM
MONDAY TO FRIDAY**

USE OF DIGITAL MATERIALS

COMPLETION CERTIFICATE

Start Dates

2023

Every Monday as the
Course is on demand for a
minimum of 6 participants



TRINITY CERT TESOL

The Trinity Certificate in Teaching English to Speakers of Other Languages (CertTESOL) is a TESOL or TEFL (Teaching English as a Foreign Language) certificate designed for people with little or no experience of teaching English, and for those with experience who require an internationally recognised initial teacher education qualification. Preparing for the Trinity CertTESOL English language teaching certificate equips trainees with the basic skills and knowledge needed to take up their first post as an ESOL teacher. It gives an introduction to the theory and practice of English teaching and an insight into the challenges facing the learner and the role of the teacher. The CertTESOL is rated at Level 5 on Ofqual's Regulated Qualifications Framework, a comparable level to the second year of an undergraduate degree. In Ireland it is seen as a post graduate (Level 8) Special Award.



ASSESSMENT UNITS

- Unit 1:** Teaching Skills
- Unit 2:** Language Awareness and Skills
- Unit 3:** The Learner Profile
- Unit 4:** The Materials Assignment
- Unit 5:** The Unknown Language



KEY ELEMENTS

Trainees complete a course of study and undertake at least **six hours** of observed teaching practice with real learners and produce reflective written assignments for assessment.

	Trinity Cert TESOL
Max number / class	18
Minimum Level	C1
Minimum Age	21
Length	4.5 weeks
Hours / week	30
Timetable	Monday to Friday 9.00 - 17.00
Start & Finish Dates 2023	March 20th to April 19th April 24th to May 24th May 29th to June 28th August 28th to September 27th



Included in the Course

EXPERIENCED TUTORS

**OBSERVATION OF
PROFESSIONAL TEACHERS**

**ESSENTIAL TESOL
KNOWLEDGE AND SKILLS**

QUALIFICATION TIME OF 200 HOURS

TRINITY TESOL CERTIFICATE

ACCESS TO SCHOOL FACILITIES

TRINITY
COLLEGE LONDON

Validated Course Provider 70583



Please, scan this QR Code for further information about the **Trinity Cert TESOL**



The Linguaviva Centre will help successful graduates find immediate placement in an ELT organisation in Dublin.



Trinity's teaching qualifications are among the most widely recognised and respected in their field





THE POINT RESIDENCE



Type of Accommodation

En-suite rooms suitable for students, minimum age 18, arranged in cluster apartments of 8 rooms.

Rooms

Each room has a small double bed, large study desk, smart TV, drawers and hanging space.

Bathrooms

En-suite bathroom.

Kitchen / Meals

Each apartment has a shared kitchen with oven, hob, fridge/freezer, microwave, toaster, kettle, utensils, cutlery, crockery, glasses, and the living area includes dining table, chairs, sofa and a coffee table.

Facilities

Gym, fitness studio, study areas, basketball court, laundry, cinema, cafes, outdoor seating and roof terrace.

Utilities / Internet

Wi-Fi, electricity, gas and water included.

Laundry / Cleaning

Bed linen is provided. Students are responsible for cleaning their own rooms and washing their bed linen. Towels are not provided.

Travel Time

About a 40-minute walk or use LUAS+Bus to Linguaviva Centre.

Security/ Keys

Fob key for your flat and room and 24 security.

Damage

Students must pay for any damage caused.

Arrival / Departure

Check in from 3:00 pm, check out 10:00 am.

Noise / Restrictions

No use of Gym or Cinema after 11:00 pm.

Check-in / Check-out

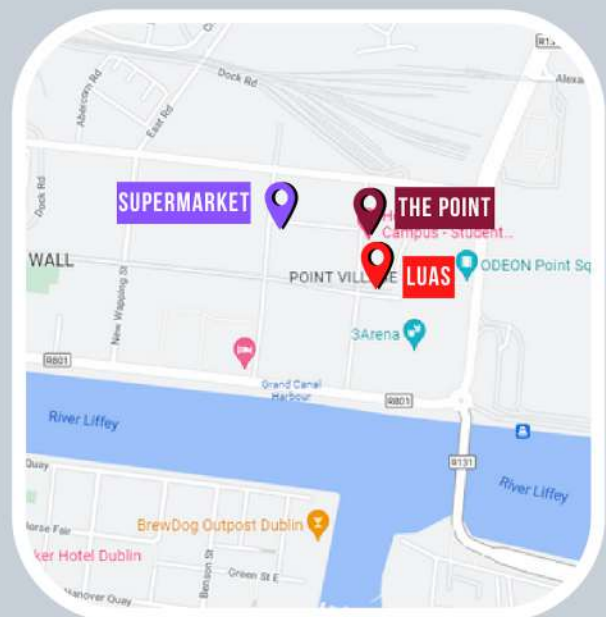
All year, minimum stay 2 weeks. Check-in must be on a Saturday or Sunday. Check-out must be on a Saturday.

Notice / Cancellation

If you want to cancel your accommodation before arrival in Ireland, you must give notice in writing. We will refund all fees minus a €200 cancellation fee unless the accommodation fees for the notice period exceed that amount. If so you will be charged €200 plus the difference.

Residential Accommodation = **4 weeks notice period**

Stylish, newly built student residence, with excellent facilities, in Point Village, in the heart of Dublin's bustling Docklands area about 40 minutes walk to Linguaviva Centre. The LUAS line and several bus routes are also nearby.



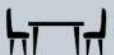
Self Catering



Free WiFi



Private Bathroom



Communal Kitchens



Gym



Fitness Studio



Cinema



Games Room



Courtyards



Rooftop Gardens



Laundry Facilities

**Rates per person per week: €315
Accommodation Placement fee: €30**



HOST FAMILY ACCOMMODATION



Type of Accommodation

Home stays are ideal for students who are under 18 years of age as well as those adults who are in Dublin for a short period of time and are looking to maximise their 'Irish Cultural experience.

Rooms

Single rooms are usually the most requested. Some homestays also provide twin and double rooms for students looking to share.

Bathrooms

En-suite bathrooms are available with some homestays for an extra charge, subject to availability

Meals

Homestays can be booked with Half (HB) or Full Board (FB) options.

HB = breakfast + dinner on weekdays with light lunch on the weekends.

FB = breakfast + packed lunch + dinner every day.

Special Diets

A limited number of hosts are able to cater for Vegetarian, Vegan, Gluten Free, Lactose Intolerant diets. This is subject to availability, and for an additional supplement.

Laundry / Cleaning

Bed linen and towels are provided. Students are responsible for keeping their own room tidy. The family will usually do one load of laundry per week for the student.

Summer Supplement

€25/week between 1/7 and 31/8

Travel Time / Cost

Host families are usually between 30-50 minutes from the school by public transport.

Keys

Hosts will usually supply the student with a set of keys.

Damage

Students must pay for any damage caused.

Arrival / Departure

Check in times are pre-arranged with the host based on flight and transfer times. It is not always possible to arrive between 23.00 and 6.00. Please check with the enrolment office before booking your flights.

Check-in / Check-out

Check-in and check-out must be on a Saturday or Sunday. Extra night supplement will be charged where applicable.

Utilities / Internet

Wi-Fi, electricity, gas and water included.

Notice / Cancellation

If you want to cancel your accommodation before arrival in Ireland, you must give notice in writing. *We will refund all fees minus a €200 cancellation fee unless the accommodation fees for the notice period exceed that amount. If so you will be charged €200 plus the difference.

*Homestay Accommodation = **3 weeks notice period**

The highest standard of host family accommodation is available to all Linguaviva students. Families are very carefully selected. All accommodation is inspected and monitored on an ongoing basis by our Accommodation Officer. Host families are situated in some of the best residential areas of Dublin. Staying in an Irish home ensures total immersion in the language. Students feel at home in the warm, friendly atmosphere of Irish family life and many lasting friendships are made between the student and host family. All our families are based on the South side of Dublin.

Please note that all families are different and this info sheet is for guidance purposes only. Students must follow their host family rules at all times during their stay.



Family experience



Practice speaking



Cultural exchange



Excellent public transport links



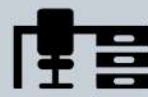
Meals included



Free WiFi



Shared bathroom



Study desk

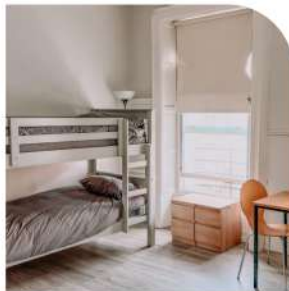
Rates per person per week: from €230
Accommodation Placement fee: €30



VIVA RESIDENCE



Located 3 minutes walk from our school, the Viva Residence is situated in the heart of Dublin. Two, three, and four bed rooms with shared kitchen and living room offers the best location to explore the city.



Type of Accommodation

A mix of en-suite and shared rooms, in 2, 3, and 4 bed dorms. Minimum age 18.

Rooms

All rooms have a single bed per person as well as storage facilities for clothes.

Bathrooms

A mix of shared, en-suite depending on room.

Kitchen / Meals

There is a shared kitchen with cupboards and fridges for storing food. The kitchen is equipped with an oven, hob, toasters, kettles, microwave and utensils.

Facilities

Shared living room with sofas and smart TV. There is WiFi throughout the building and a washer/dryer for laundry.

Utilities / Internet

Wi-Fi, electricity, and water included.

Laundry / Cleaning

Bed linen is provided. Students are responsible for cleaning their own rooms and washing their bed linen. Towels are not provided.

Travel Time

3 minutes walk to our school, located 210 metres away.

Security / Keys

There is an on-site Residence Manager and students are given a key to the building.

Damage

Students must pay for any damage caused.

Arrival / Departure

Check in from 3:00 pm, check out 10:00 am.

Noise Restrictions

We ask that students respect fellow guests and keep noise to a minimum after 10 p.m.

Check-in / Check-out

All year, minimum stay 1 week, maximum stay 6 weeks.

Check-in must be on a Saturday or Sunday.

Check-out must be on a Saturday.

Notice / Cancellation

If you want to cancel your accommodation before arrival in Ireland, you must give notice in writing. We will refund all fees minus a €200 cancellation fee unless the accommodation fees for the notice period exceed that amount. If so you will be charged €200 plus the difference.

Residential Accommodation = **4 weeks notice period**



Self Catering



Free Wi-Fi



Shared & En-suite



Communal Kitchen



Laundry facilities



Smart TV



2 min walk to School

Rates per person per week:

Sharing 4: €235

Sharing 3: €245

Sharing 2: €255

Accommodation Placement fee: €30



ESTD

1977

LINGUAVIVA CENTRE

CALENDAR 2023

JANUARY

M	T	W	T	F	S	S
						1
2	3	4	5	6	7	8
9	10	11	12	13	14	15
16	17	18	19	20	21	22
23	24	25	26	27	28	29
30	31					

FEBRUARY

M	T	W	T	F	S	S
		1	2	3	4	5
6	7	8	9	10	11	12
13	14	15	16	17	18	19
20	21	22	23	24	25	26
27	28					

MARCH

M	T	W	T	F	S	S
		1	2	3	4	5
6	7	8	9	10	11	12
13	14	15	16	17	18	19
20	21	22	23	24	25	26
27	28	29	30	31		

APRIL

M	T	W	T	F	S	S
					1	2
3	4	5	6	7	8	9
10	11	12	13	14	15	16
17	18	19	20	21	22	23
24	25	26	27	28	29	30

CALENDAR NOTES

There are no classes on Bank Holidays.

There are no classes for 2 weeks from December 18, 2023 to January 2, 2024.

In 2024 the schools will open again on January 2.

■ = School is closed

MAY

M	T	W	T	F	S	S
1	2	3	4	5	6	7
8	9	10	11	12	13	14
15	16	17	18	19	20	21
22	23	24	25	26	27	28
29	30	31				

JUNE

M	T	W	T	F	S	S
			1	2	3	4
5	6	7	8	9	10	11
12	13	14	15	16	17	18
19	20	21	22	23	24	25
26	27	28	29	30		

JULY

M	T	W	T	F	S	S
					1	2
3	4	5	6	7	8	9
10	11	12	13	14	15	16
17	18	19	20	21	22	23
24	25	26	27	28	29	30
31						

AUGUST

M	T	W	T	F	S	S
	1	2	3	4	5	6
7	8	9	10	11	12	13
14	15	16	17	18	19	20
21	22	23	24	25	26	27
28	29	30	31			

SEPTEMBER

M	T	W	T	F	S	S
				1	2	3
4	5	6	7	8	9	10
11	12	13	14	15	16	17
18	19	20	21	22	23	24
25	26	27	28	29	30	

OCTOBER

M	T	W	T	F	S	S
						1
2	3	4	5	6	7	8
9	10	11	12	13	14	15
16	17	18	19	20	21	22
23	24	25	26	27	28	29
30	31					

NOVEMBER

M	T	W	T	F	S	S
		1	2	3	4	5
6	7	8	9	10	11	12
13	14	15	16	17	18	19
20	21	22	23	24	25	26
27	28	29	30			

DECEMBER

M	T	W	T	F	S	S
				1	2	3
4	5	6	7	8	9	10
11	12	13	14	15	16	17
18	19	20	21	22	23	24
25	26	27	28	29	30	

