



Accommodation



Accommodation Matters

Staying with a Host Family

Inlingua host families are chosen for the welcoming atmosphere in their home. If you choose this type of accommodation, you will learn Maltese customs and traditions, whilst rapidly improving your English through constant communication with your host family. This is a safe and secure options for young students and they can choose to sleep in a single or shared room, on Half or Full Board Basis.

PRICE PER PERSON PER NIGHT	BOARD BASIS	STANDARD	HIGH (1st June - 1st Sept)
Host Family Single Room	Half Board	45	55
	Full Board	50	60
Host Family Sharing Room	Half Board	31	42
	Full Board	41	50
Supplement	Dietary Request	20	20



St. Julians Self-Catering Budget Shared Apartments

Self-catering budget student accommodation, located centrally in the popular town of St. Julian's and is 20 minutes away from the school by bus. These shared apartments are situated around a large central courtyard with FREE Wifi in all rooms. All apartments enjoy twin rooms with ceiling fans, lounge area and kitchenette with basic cooking facilities, kettle, toaster and fridge. Weekly clean and linen change are provided. The use of a swimming pool is also available in high season.

Facilities include:

Self-catering apartment, Bed type – twin rooms, shared bathrooms, weekly cleaning, bed linen and towel are provided, fully-equipped kitchen with microwave, iron and ironing board, swimming pool & free WIFI.

ROOM TYPE	1 WEEK	8 WEEKS+	12 WEEKS+	24 WEEKS+	32 WEEKS+	40 WEEKS+	48 WEEKS +
Shared Apartment	139	1089	1404	2808	3744	4680	5616

High Season Supplement (1st June - 1st September)
 1-11 weeks - €38.50per week | 12+ weeks €24.50 per week



inlingua Sliema Self-Catering Shared Apartments

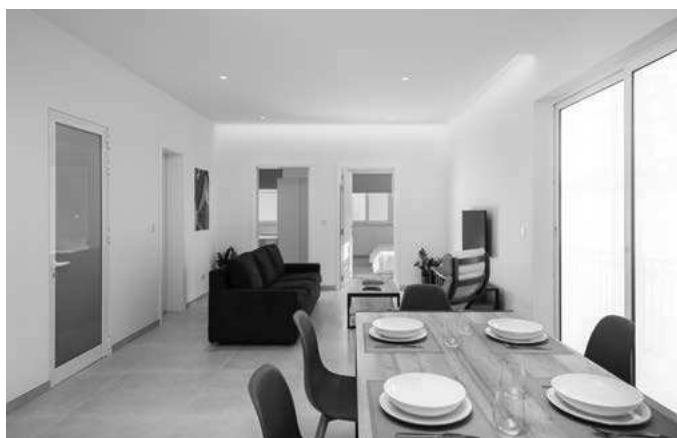
Located in Sliema a few minutes away from the school, the Sliema shared apartment option is perfect for adult students staying 4 weeks or longer and boast all that is required to have a long comfortable stay. Student will enjoy communal living in the form of triple rooms shared living, with shared kitchen and bathroom facilities. All apartments include laundry facilities and climate control.

Facilities include:

Self-catering apartment, Bed type – triple, shared bathrooms, cleaning twice weekly, bed linen is provide and changed weekly, towels are provided, laundry facilities, fully-equipped kitchen with microwave, iron and ironing board, accessibility to balconies, air-conditioning and free WIFI.

ROOM TYPE	1 WEEK	8 WEEKS+	12 WEEKS+	24 WEEKS+	32 WEEKS+	40 WEEKS+	48 WEEKS +
Shared Apartment	160	1240	1800	3600	4800	6000	7200

High Season Supplement (1st June - 1st September)
 1-11 weeks - €43.00 per week | 12+ weeks €27.00 per week



Campus Hub

Campus Hub is located in the nearby student town of Msida, and is just a 25 minute bus ride from our school. Students can opt to choose different rooming options, to choose between different levels of privacy whether preferring private room options to more communal living spaces and rooms.

Accommodation is in the form of single rooms, twin rooms in a room cluster or shared apartments. A studio apartment option is also available

Cluster Apartments use the facilities of a Communal Kitchen and Lounge area. Students can choose a single room, a single room with an ensuite, a Twin Room or a Twin Room with an ensuite in a Cluster Apartment.

Shared Apartments offer their own kitchenette and relaxation area. Students opting for a Shared Apartment can choose a single room or a twin room in a shared apartment.

What's included?

Bed linen and towel change weekly, fully functional kitchen, lounge area, wardrobe and study space, kitchenette, private bathrooms (en-suite or shared per 4 people), AC and climate control in room, check-in and check-out facility, 24/7 reception service, laundry facilities, pool facilities, student lounge & study lounge & free WIFI.

ROOM TYPE	1 WEEK	8 WEEKS	12 WEEKS+	16 WEEKS+	24 WEEKS+	32 WEEKS+	40 WEEKS +	48 WEEKS+
Twin Cluster Apartment with Shared Bathroom	188	1504	2058	2744	4116	5488	6860	8232

High Season Supplement (17th June - 31st August) €27.00 per week
Single rooms, Studio apartments & En-suite bathroom options are available on request



Single Room



Twin Room



Studio Apartment

Corner Boutique Hostel (Rates Starting from EUR 20 per night)

Corner Boutique Hostel is located in Sliema in one of the location's grand traditional Maltese houses. This charming boutique hostel offers comfortable and affordable living in a non-typical set up. Each bedroom sleeps max 4 people and offers ensuite bathroom facilities. A number of double rooms are also available. A large communal kitchen and living space is located on the lower floor together with manned reception area offering a number of services. The environment is buzzing and it is ideal for the young traveler visiting for 8 weeks or more!

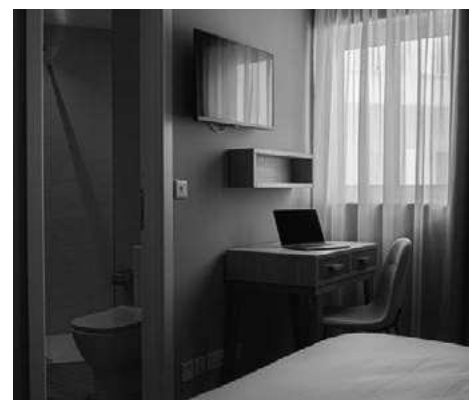
Facilities include: shared or single bedrooms all with ensuite bathrooms (bunk-beds or double beds available), check-in/check-out service, cleaning daily with a deep clean weekly, bed Linen and towels provided and changed weekly, laundry facilities available on site, fully equipped communal kitchen, Free WIFI.



Ta' Tereza (Rates Starting from EUR 60 per night)

This newly refurbished hotel in central Sliema just 10 minutes away from school boasts an excellent standard offering the independence and privacy of a small hotel. A number of rooming options offer modern facilities and furnishings all with an ensuite bathroom together with TV, air-conditioning and heating. Breakfast may also be included in the price options and may be enjoyed on the terrace.

Facilities include: Fully equipped rooms, breakfast, ensuite bathrooms, daily housekeeping, sun terrace, free WIFI, reception services, air-conditioning, ironing service.



Hotel Accommodation

Preluna Hotel (Rates starting from EUR 80 per night)

Set on the Sliema promenade this hotel is located 5 minutes away from the school and features both on-site and off-site facilities. Spread over 12 floors, spacious guest rooms offer great sea views whilst its central location means everything is a few minutes away. Recommended for the business traveler or families.

Facilities include: Private beach club, fitness and wellness spa, free WIFI, 4 restaurants, 3 bars, swimming pool, all air-conditioned rooms, tea/coffee making facilities, satellite TV and private bathrooms.



1926 Hotel and Spa (Rates starting from EUR 130 per night)

Situated in the heart of Sliema, this hotel is just a corner away from the school. It is the statement of lean luxury and modernity with its remarkable Beach Club just 200 m away it is ideal to combine learning, with luxury living and relaxation by the water's edge.

Facilities include: Variety of room types including family rooms, private bathrooms, balconies, tea and coffee making facilities, ironing facilities, fitness room, air-conditioning, swimming pool, WIFI and work stations in each room.



ST Bayview, St Blubay and St Azur Hotel (Rates starting from EUR 65 per night)

All properties are located 15 minutes away from school and are situated in the buzzing center of Sliema and Gzira on the promenade, the location is ideal for connecting to all parts of the island. Accommodation consists of aparthotel style rooms as well as regular hotel guest rooms.

Facilities include: Variety of room options, aparthotel style rooms, seaview or inland rooms, swimming pools and lido, air-conditioning, free WIFI, breakfast and full-board options available.



Family Apartments (Rates starting from EUR 80 per night)

These apartments are located within the vicinity of the school and are ideal for families who wish to travel together for a number of weeks but would like the independence of living in a self-catering apartment. Fully equipped with all that is required for a comfortable stay, families can opt to choose a one-bedroom or 2 bedroom apartment.

Facilities include: Fully-equipped kitchens, cleaning and laundry facilities, self-check-in, climate control in bedrooms, private bathrooms and living spaces. Free WIFI.

